

Data Sheet

iL Precision 300F/SP

BIZERBA

Precision in a robust design: This load receptor of class II is impressive in terms of its high accuracy of up to 60.000d. The weighing performance is reliably achieved by this model with integrated strain gauge load cell without any lever work or motorized adjustment device. You benefit from precision in a simple, durable design.



More information
High performance with a wide range of solutions and options.

Product description

Single-point load receptor iL Precision 300F/SP is designed for use in a dry area: For the compact model we use galvanized steel and a strain gauge load cell made of aluminum. The visible bell-shaped platform is made of stainless steel.

Besides its durable and robust design this load receptor of accuracy class II is impressive in terms of its high resolution of up to 60.000d. Therefore it is among other things ideally suitable as a reference scale.

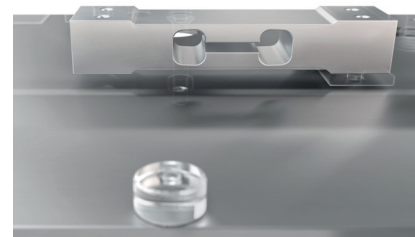
Other than comparable precision scale technologies the uncomplicated iL Precision 300F/SP achieves precise weighing results without a lever work or a motorized adjustment device.



iL Precision 300F/SP

Highlights

- Robust and flat design
- Long-term accuracy and wear-resistance, even when used regularly for tough weighing tasks
- High resolutions of up to 6.000e or 60.000d
- High protection IP67
- Flexible use in a dry, non-aggressive atmosphere
- Durable materials
 - Load platter: stainless steel
 - Base and load support: Galvanized steel
 - Weigh cell: PW6C, SP4M aluminum
- Integrated overload protection to protect the load cell



Single-point load cell made of aluminum

Options

- Stand versions: Galvanized steel or stainless steel
- Non-driven roller conveyors: 335x260 mm and 500x400 mm
- Cable junction box KA-1
- S/s column for weighing terminals iS30 and iS50
- Electrical preload compensation

Bizerba SE & Co. KG
Wilhelm-Kraut-Straße 65
72336 Balingen
Germany

T +49 7433 12-0
F +49 7433 12-2696
marketing@bizerba.com

www.bizerba.com