

Fact Sheet

iL Economy 300F/SP Type2

BIZERBA

The load receptor for all applications ... thanks to its simple and robust design, this stand-alone entry model allows flexible adjustment to different applications whether integrated in desks or systems or for mobile use.



More information
High performance
with a wide range of
solutions and options.

Specifications	Facts	Details
Weighing ranges	from 0.6 kg to 300 kg	Scale interval of 0.2 g - 100 g
Load cell made of aluminum	PW6C, nominal load 3 - 40 kg, IP67 SP4M, nominal load 15 - 50 kg, IP67 PW10A, nominal load 50 - 300 kg, IP67 PW12C, nominal load 150 - 500 kg, IP67	for operation in dry areas with a non-aggressive atmosphere
Load cells in stainless steel version	PC6, nominal load 10 kg - 400 kg, IP68 PW29, nominal load 250 kg, IP68 / IP69 PCB, nominal load 250 - 500 kg, IP68 / IP69	for operation in a wet environment with high cleaning requirements
Dimensions	Dimensions of load platter: 200 x 160 mm Dimensions of load platter: 335 x 260 mm Dimensions of load platter: 335 x 260 mm Dimensions of load platter: 500 x 400 mm Dimensions of load platter: 600 x 450 mm Dimensions of load platter: 600 x 600 mm Dimensions of load platter: 800 x 600 mm	Overall height 56 mm +15 mm with PW6C load cell Overall height 56 mm +15 mm with PW6C load cell Overall height 80 mm +15 mm with SP4M & PC6 Overall height 85 mm +15 mm with PW10A & PC6 Overall height 91 mm +15 mm with PW10A & PC6 Overall height 91 mm +15 mm with PW10A & PC6 Overall height 120 mm +20 mm with PW12 load cell Overall height 125 mm +25 mm with PW29 und PCB
Material version	Base- and load carrier electrogalvanized, load platter made of stainless steel Entirely made of stainless steel	Load cell made of aluminum Load cell made of s/s
Mounting method	Free-standing	table / floor mount
Protection class	IP67 IP68 IP68 / IP69	with load cells PW6C, SP4M, PW10A, PW12C with load cell PC6 with load cell PW29, PCB
Ex version	Zone 1/21 Zone 2/22	Load cells in Ex version for Ex zone 1 & 21 Load cells in Ex version for Ex zone 2 & 22 (see following table)
Ambient temperature	Operation: -10 °C to +40 °C Storage: -50 °C to +85 °C	
Options	Facts	Details
Preload compensation	Electronic	Weight for preload compensation must be stipulated with purchase order.
Stand	Version in stainless steel for terminals eS10-T, iS10, iS20, iS30, iS50 and ST	to be attached to load receptors 335 x 260, 500 x 400, 600 x 450, 600 x 600 and 800 x 600 mm

Roller conveyor non-powered, mounted to load platter, "not suitable for EX zone" "not suitable for wet areas"

Frame: Aluminum u-shaped profile
 Rollers: Plastic (blue),
 Bearing: Plastic bottoms with s/s balls
 Axes and cross-struts: Stainless steel

For load platter size: 335 x 260 mm
 Load capacity: 30 kg
 Number of rollers: 8
 Frame dimensions: 338 x 252 mm
 Roller pitch: 44 mm
 Roller conveyor height: 77 mm
 For load carrier with max. preload of ≥ 4 kg

Frame: Aluminum u-shaped profile
 Rollers: Plastic (blue),
 Bearing: Plastic bottoms with s/s balls
 Axes and cross-struts: Stainless steel

For load platter size: 500 x 400 mm
 Load capacity: 60 kg
 Number of rollers: 10
 Frame dimensions: 490 x 397 mm
 Roller pitch: 50 mm
 Roller conveyor height: 75 mm
 For load carrier with max. preload of ≥ 5 kg

Frame: Aluminum u-shaped profile
 Rollers: Steel, galvanized
 Bearing: Steel, galvanized
 Axes and cross-struts: Aluminium

For load platter size: 600 x 450 mm
 Load capacity: 150 kg
 Number of rollers: 11
 Frame dimensions: 790 x 586 mm
 Roller pitch: 75 mm
 Roller conveyor height: 75 mm
 For load carrier with max. preload of ≥ 8 kg

Frame: Aluminum u-shaped profile
 Rollers: Plastic (blue),
 Bearing: Plastic bottoms with s/s balls
 Axes and cross-struts: Stainless steel

For load platter size: 800 x 600 mm
 Load capacity: 60 kg
 Number of rollers: 11
 Frame dimensions: 790 x 586 mm
 Roller pitch: 75 mm
 Roller conveyor height: 75 mm
 For load carrier with max. preload of ≥ 10 kg

Roller conveyor non-powered, mounted to load platter "suitable for EX zone" "not suitable for wet areas"

Frame: Aluminum u-shaped profile
 Rollers: Steel, galvanized
 Bearing: Bearing insert made of galvanized steel plate,
 with single-row ball bearing
 Axes and cross-struts: Steel, galvanized

For load platter size: 500 x 400 mm
 Load capacity: 150 kg
 Number of rollers: 10
 Frame dimensions: 490 x 395 mm
 Roller pitch: 50 mm
 Roller conveyor height: 75 mm
 For load carrier with max. preload of ≥ 10 kg

Frame: Bracket, galvanized steel
 Rollers: Steel, galvanized
 Bearing: Bearing insert made of galvanized steel plate,
 with single-row ball bearing
 Shafts: Stainless steel 12 mm

For load platter size: 800 x 600 mm
 Load capacity: 300 kg
 Number of rollers: 8
 Frame dimensions: 790 x 598 mm
 Roller pitch: 100 mm
 Roller conveyor height: 59 mm
 For load carrier with max. preload of ≥ 18 kg

Bench

For load receptor 335 x 260 mm
 - Material: Steel hot-dip galvanized
 - Material: Stainless steel

height at upper edge of stand = 724 mm +15 mm

For load receptor 500 x 400 mm
 - Material: Steel hot-dip galvanized
 - Material: Stainless steel

height at upper edge of stand = 724 mm +15 mm

For load receptor 800 x 600 mm
 - Material: Steel hot-dip galvanized
 - Material: Stainless steel

height at upper edge of stand = 724 mm +15 mm

Portable wheeled for load receptor 500 x 400 mm

Mobile stand for mains operation
Mobile stand for battery operation

Material: Steel, hot-dip galvanized
Material: Stainless steel

Mobile stand for mains operation
Ex – Zone 1&2

Material: Steel, hot-dip galvanized
Material: Stainless steel

Mobile stand for battery operation
Ex – Zone 1&2

Material: Steel, hot-dip galvanized
Material: Stainless steel

Material: Steel, hot-dip galvanized
Material: Stainless steel

Counter-top mounting

For terminals eS10-T, iS10 and iS20 (not for version with an overall height of 56 mm)

For dimensions 335 x 260, 500 x 400, 600 x 450, 600 x 600 and 800 x 600 mm

Sealing compound

For cable junction box

connection of load receptor to existing terminal

Infographic

Example for model 335 x 260, aluminum, height 56. For more models see page 5 and following.

Weighing range	Metrologically approved scale interval	Dimensions	Load cell	Protection class	max. preload	Overall height in mm	Variants			
							Complete stainless steel	Galvanized steel / stainless steel	EX Zone 1/21	EX Zone 2/22
335x260, Load cell aluminium, height 56										
3 kg	1 g	335 x 260 mm	PW6C 15kg C3 aluminium	IP67	7 kg	56 +15		X		
6 kg	1 g	335 x 260 mm	PW6C 15kg C6 aluminium	IP67	4 kg	56 +15		X		
6 kg	2 g	335 x 260 mm	PW6C 15kg C3 aluminium	IP67	4 kg	56 +15		X		
3 / 6 kg Dual-range scale	1 / 2 g	335 x 260 mm	PW6C 15kg C3MR aluminium	IP67	4 kg	56 +15		X		
3 / 6 kg Dual interval scale	1 / 2 g	335 x 260 mm	PW6C 15kg C6 aluminium	IP67	4 kg	56 +15		X		
12 kg	2 g	335 x 260 mm	PW6C 30kg C6 aluminium	IP67	10 kg	56 +15		X		
15 kg	5 g	335 x 260 mm	PW6C 30kg C3MR aluminium	IP67	10 kg	56 +15		X		
6 / 15 kg Dual-range scale	2 / 5 g	335 x 260 mm	PW6C 30kg C3MR aluminium	IP67	15 kg	56 +15		X		
6 / 12 kg Dual interval scale	2 / 5 g	335 x 260 mm	PW6C 30kg C6 aluminium	IP67	15 kg	56 +15		X		
30 kg	5 g	335 x 260 mm	PW6C 40kg C6 aluminium	IP67	4 kg	56 +15		X		
30 kg	10 g	335 x 260 mm	PW6C 40kg C3 aluminium	IP67	4 kg	56 +15		X		
15 / 30 kg Dual-range scale	5 / 10 g	335 x 260 mm	PW6C 40kg C3MR aluminium	IP67	4 kg	56 +15		X		
15 / 30 kg Dual interval scale	5 / 10 g	335 x 260 mm	PW6C 40kg C6 aluminium	IP67	4 kg	56 +15		X		

Symbols



Protection class IP68



Protection class IP69



Single point



Ex-Zone 1/21



Ex-Zone 2/22



Ground

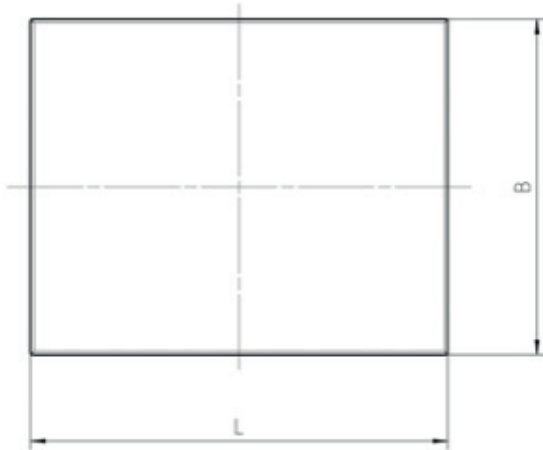


Table



Mobile

Dimensions



Typ / TYPE	Material	L	B	H	C	D	Maßblatt / DIM. DRAWING
200 x 160	g	200	160	56+15	158	118	38050602000
335 x 260	g	335	260	56+15	293	218	38059508000
335 x 260	g / st	335	260	80+15	293	218	38059506000
500 x 400	g / st	500	400	85+15	410	310	38060659000
600 x 450	g / st	600	450	91+15	480	360	38060004000
600 x 600	st	600	600	91+15	480	510	38060013000
800 x 600	g	800	600	120+20	650	500	38058000000
800 x 600	st	800	600	125+25	650	500	38060015000

g: verzinkt / GALVANIZED STEEL
st: Edelstahl / STAINLESS STEEL

Bizerba SE & Co. KG
Wilhelm-Kraut-Straße 65
72336 Balingen
Germany
T +49 7433 12-0
F +49 7433 12-2696
marketing@bizerba.com

www.bizerba.com

Weighing range	Metrologically approved scale interval	Dimensions	Load cell	Protection class	max. preload	Overall height in mm	Variants			
							Complete stainless steel	Galvanized steel / stainless steel	EX Zone 1/21	EX Zone 2/22
200x160, Load cell aluminium, height 56										
0,6 / 1,2 kg Dual-range scale	0,2 / 0,5 g	200 x 160 mm	PW6C 3kg C3MR aluminium	IP67	0 kg	56 +15		X		
1,2 kg	0,2 g	200 x 160 mm	PW6C 3kg C6 aluminium	IP67	0 kg	56 +15		X		
1,5 / 3 kg Dual-range scale	0,5 / 1 g	200 x 160 mm	PW6C 5kg C3MR aluminium	IP67	0 kg	56 +15		X		
3 kg	0,5 g	200 x 160 mm	PW6C 5kg C6 aluminium	IP67	0 kg	56 +15		X		
3 kg	1 g	200 x 160 mm	PW6C 5kg C3MR aluminium	IP67	0 kg	56 +15		X		
335x260, Load cell aluminium, height 56										
3 kg	1 g	335 x 260 mm	PW6C 15kg C3 aluminium	IP67	7 kg	56 +15		X		
6 kg	1 g	335 x 260 mm	PW6C 15kg C6 aluminium	IP67	4 kg	56 +15		X		
6 kg	2 g	335 x 260 mm	PW6C 15kg C3 aluminium	IP67	4 kg	56 +15		X		
3 / 6 kg Dual-range scale	1 / 2 g	335 x 260 mm	PW6C 15kg C3MR aluminium	IP67	4 kg	56 +15		X		
3 / 6 kg Dual interval scale	1 / 2 g	335 x 260 mm	PW6C 15kg C6 aluminium	IP67	4 kg	56 +15		X		
12 kg	2 g	335 x 260 mm	PW6C 30kg C6 aluminium	IP67	10 kg	56 +15		X		
15 kg	5 g	335 x 260 mm	PW6C 30kg C3MR aluminium	IP67	10 kg	56 +15		X		
6 / 15 kg Dual-range scale	2 / 5 g	335 x 260 mm	PW6C 30kg C3MR aluminium	IP67	15 kg	56 +15		X		
6 / 12 kg Dual interval scale	2 / 5 g	335 x 260 mm	PW6C 30kg C6 aluminium	IP67	15 kg	56 +15		X		
30 kg	5 g	335 x 260 mm	PW6C 40kg C6 aluminium	IP67	4 kg	56 +15		X		
30 kg	10 g	335 x 260 mm	PW6C 40kg C3 aluminium	IP67	4 kg	56 +15		X		
15 / 30 kg Dual-range scale	5 / 10 g	335 x 260 mm	PW6C 40kg C3MR aluminium	IP67	4 kg	56 +15		X		
15 / 30 kg Dual interval scale	5 / 10 g	335 x 260 mm	PW6C 40kg C6 aluminium	IP67	4 kg	56 +15		X		
335x260, Load cell aluminium, height 80										
3 kg	1 g	335 x 260 mm	SP4M 15kg C3MR aluminium	IP67	7 kg	80 +15		X	X	X
6 kg	1 g	335 x 260 mm	SP4M 15kg C6MR aluminium	IP67	4 kg	80 +15		X	X	X
6 kg	2 g	335 x 260 mm	SP4M 15kg C3MR aluminium	IP67	4 kg	80 +15		X	X	X
3 / 6 kg Dual-range scale	1 / 2 g	335 x 260 mm	SP4M 15kg C3MR aluminium	IP67	4 kg	80 +15		X	X	X
3 / 6 kg Dual interval scale	1 / 2 g	335 x 260 mm	SP4M 15kg C6MR aluminium	IP67	4 kg	80 +15		X	X	X
12 kg	2 g	335 x 260 mm	SP4M 36kg C6MR aluminium	IP67	15 kg	80 +15		X	X	X
15 kg	5 g	335 x 260 mm	SP4M 30kg C3MR aluminium	IP67	4 kg	80 +15		X	X	X
6 / 15 kg Dual-range scale	2 / 5 g	335 x 260 mm	SP4M 30kg C3MR aluminium	IP67	15 kg	80 +15		X	X	X
6 / 12 kg Dual interval scale	2 / 5 g	335 x 260 mm	SP4M 36kg C6MR aluminium	IP67	15 kg	80 +15		X	X	X
30 kg	10 g	335 x 260 mm	SP4M 50kg C3MR aluminium	IP67	4 kg	80 +15		X	X	X
15 / 30 kg Dual-range scale	5 / 10 g	335 x 260 mm	SP4M 50kg C3MR aluminium	IP67	4 kg	80 +15		X	X	X
335x260, Load cell stainless steel, height 80										
1,5/3 kg Dual interval scale	0,5 / 1 g	335 x 260 mm	PC6 10 kg C3/MI6 stainless steel	IP68	1 kg	80 +15	X		X	X
3 kg	1 g	335 x 260 mm	PC6 20kg C3 stainless steel	IP68	7 kg	80 +15	X		X	X
6 kg	2 g	335 x 260 mm	PC6 20kg C3 stainless steel	IP68	4 kg	80 +15	X		X	X
3/6 kg Dual interval scale	1 / 2 g	335 x 260 mm	PC6 20kg C3/MI6 stainless steel	IP68	4 kg	80 +15	X		X	X

Weighing range	Metrologically approved scale interval	Dimensions	Load cell	Protection class	max. preload	Overall height in mm	Variants			
							Complete stainless steel	Galvanized steel / stainless steel	EX Zone 1/21	EX Zone 2/22
15 kg	5 g	335 x 260 mm	PC6 50kg C3 stainless steel	IP68	4 kg	80 +15	X		X	X
6 / 15 kg Dual-range scale	2 / 5 g	335 x 260 mm	PC6 50kg C3/M16 stainless steel	IP68	15 kg	80 +15	X		X	X
6 / 12 kg Dual interval scale	2 / 5 g	335 x 260 mm	PC6 50kg C3/M16 stainless steel	IP68	15 kg	80 +15	X		X	X
30	10 g	335 x 260 mm	PC6 100kg C3 stainless steel	IP68	4 kg	80 +15	X		X	X
15 / 30 kg Dual interval scale	5 / 10 g	335 x 260 mm	PC6 100kg C3/M16 stainless steel	IP68	4 kg	80 +15	X		X	X
500x400, Load cell aluminium										
15 kg	5 g	500 x 400 mm	PW10A 50kg C3MR aluminium	IP67	15 kg	85 +15		X	X	X
30 kg	10 g	500 x 400 mm	PW10A 100kg C3MR aluminium	IP67	30 kg	85 +15		X	X	X
15 / 30 kg Dual-range scale	5 / 10 g	500 x 400 mm	PW10A 50kg C3MR aluminium	IP67	15 kg	85 +15		X	X	X
60 kg	20 g	500 x 400 mm	PW10A 150kg C3 aluminium	IP67	80 kg	85 +15		X	X	X
30 / 60 kg Dual-range scale	10 / 20 g	500 x 400 mm	PW10A 150kg C3MR aluminium	IP67	80 kg	85 +15		X	X	X
150 kg	50 g	500 x 400 mm	PW10A 300 kg C3 aluminium	IP67	20 kg	85 +15		X	X	X
60 / 150 kg Dual-range scale	20 / 50 g	500 x 400 mm	PW10A 300 kg C3MR aluminium	IP67	20 kg	85 +15		X	X	X
500x400, Load cell stainless steel										
15 kg	5 g	500 x 400 mm	PC6 50kg C3 stainless steel	IP68	15 kg	85 +15	X		X	X
6 / 12 kg Dual interval scale	2 / 5 g	500 x 400 mm	PC6 50kg C3/M16 stainless steel	IP68	15 kg	85 +15	X		X	X
30 kg	10 g	500 x 400 mm	PC6 100kg C3 stainless steel	IP68	30 kg	85 +15	X		X	X
15 / 30 kg Dual interval scale	5 / 10 g	500 x 400 mm	PC6 100kg C3/M16 stainless steel	IP68	30 kg	85 +15	X		X	X
60 kg	20 g	500 x 400 mm	PC6 200kg C3 stainless steel	IP68	80 kg	85 +15	X		X	X
30 / 60 kg Dual interval scale	10 / 20 g	500 x 400 mm	PC6 200kg C3/M16 stainless steel	IP68	80 kg	85 +15	X		X	X
150 kg	50 g	500 x 400 mm	PC6 200kg C3 stainless steel	IP68	20 kg	85 +15	X		X	X
60 / 150 kg Dual-range scale	20 / 50 g	500 x 400 mm	PC6 200kg C3/M16 stainless steel	IP68	20 kg	85 +15	X		X	X
60 / 120 kg Dual interval scale	20 / 50 g	500 x 400 mm	PC6 200kg C3/M16 stainless steel	IP68	20 kg	85 +15	X		X	X
600x450, Load cell aluminium										
30 kg	10 g	600 x 450 mm	PW10A 100kg C3MR aluminium	IP67	50 kg	91 +15		X	X	X
15 / 30 kg Dual-range scale	5 / 10 g	600 x 450 mm	PW10A 50kg C3MR aluminium	IP67	4 kg	91 +15		X	X	X
60 kg	20 g	600 x 450 mm	PW10A 150kg C3 aluminium	IP67	15 kg	91 +15		X	X	X
30 / 60 kg Dual-range scale	10 / 20 g	600 x 450 mm	PW10A 150kg C3MR aluminium	IP67	15 kg	91 +15		X	X	X
150 kg	50 g	600 x 450 mm	PW10A 300 kg C3 aluminium	IP67	20 kg	91 +15		X	X	X
60 / 150 kg Dual-range scale	20 / 50 g	600 x 450 mm	PW10A 300 kg C3MR aluminium	IP67	20 kg	91 +15		X	X	X
600x450, Load cell stainless steel										
30 kg	10 g	600 x 450 mm	PC6 100kg C3 stainless steel	IP68	30 kg	91 +15	X		X	X
15 / 30 kg Dual interval scale	5 / 10 g	600 x 450 mm	PC6 100kg C3/M16 stainless steel	IP68	30 kg	91 +15	X		X	X

Weighing range	Metrologically approved scale interval	Dimensions	Load cell	Protection class	max. preload	Overall height in mm	Variants			
							Complete stainless steel	Galvanized steel / stainless steel	EX Zone 1/21	EX Zone 2/22
60 kg	20 g	600 x 450 mm	PC6 200kg C3 stainless steel	IP68	80 kg	91 +15	X		X	X
30 / 60 kg Dual interval scale	10 / 20 g	600 x 450 mm	PC6 200kg C3/M16 stainless steel	IP68	80 kg	91 +15	X		X	X
150 kg	50 g	600 x 450 mm	PC6 200kg C3 stainless steel	IP68	20 kg	91 +15	X		X	X
60 / 150 kg Dual-range scale	20 / 50 g	600 x 450 mm	PC6 200kg C3/M16 stainless steel	IP68	20 kg	91 +15	X		X	X
60 / 120 kg Dual interval scale	20 / 50 g	600 x 450 mm	PC6 200kg C3/M16 stainless steel	IP68	20 kg	91 +15	X		X	X
600x600, Load cell stainless steel										
30 kg	10 g	600 x 600 mm	PC6 100kg C3 stainless steel	IP68	30 kg	91 +15	X		X	X
15 / 30 kg Dual-range scale	5 / 10 g	600 x 600 mm	PC6 100kg C3/M16 stainless steel	IP68	30 kg	91 +15	X		X	X
15 / 30 kg Dual interval scale	5 / 10 g	600 x 600 mm	PC6 100kg C3/M16 stainless steel	IP68	30 kg	91 +15	X		X	X
60 kg	20 g	600 x 600 mm	PC6 200kg C3 stainless steel	IP68	80 kg	91 +15	X		X	X
30 / 60 kg Dual-range scale	10 / 20 g	600 x 600 mm	PC6 200kg C3/M16 stainless steel	IP68	80 kg	91 +15	X		X	X
30 / 60 kg Dual interval scale	10 / 20 g	600 x 600 mm	PC6 200kg C3/M16 stainless steel	IP68	80 kg	91 +15	X		X	X
60 / 150 kg Dual-range scale	20 / 50 g	600 x 600 mm	PC6 200kg C3 stainless steel	IP68	20 kg	91 +15	X		X	X
150 kg	50 g	600 x 600 mm	PC6 200kg C3/M16 stainless steel	IP68	20 kg	91 +15	X		X	X
800x600, Load cell aluminium										
30 kg	10 g	800 x 600 mm	PW12C 150kg C3MR aluminium	IP67	60 kg	117 +20		X	X	X
60 kg	20 g	800 x 600 mm	PW12C 150kg C3 aluminium	IP67	60 kg	117 +20		X	X	X